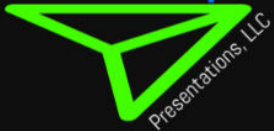


Lou Pepe



delivering the message



New Jersey School Boards Association

School Boards Guide to Safer Schools in New Jersey

Louis J. Pepe, RSBA, SFO
Assistant Superintendent,
School Safety Officer
City of Summit Public Schools

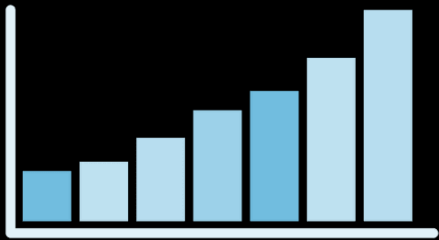
*Making Smarter Decisions
That Impact The Safety of our Schools*

Create a culture of safety in your
school's leadership

When it comes to safety and security

“You need to listen like your life depends on it; your job just might, or the lives of others.”

– SMARTER DECISION-MAKING AVOIDING POOR DECISIONS THROUGH EFFECTIVE LISTENING



Ongoing Concern

School Shootings
have increased
in both
frequency
and **severity**



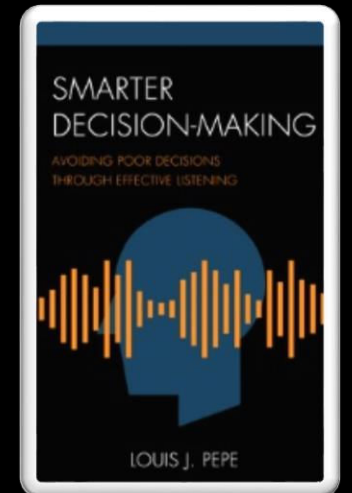
Call To Action (CTA)

“If you see
something, say
something.”
US Department of
Homeland Security



Behind the Numbers

A look into school shootings
statistics for 2018
EDUCATION WEEK NEWS JOURNAL



Behind the Numbers

2018 TOTALS



WHERE THE SHOOTINGS HAPPENED

January 8, 2020

EDUCATION WEEK

LOGIN | SUBSCRIBE

<https://www.edweek.org/ew/section/multimedia/the-school-shootings-of-2018-whats-behind.html>

Facts About School Shootings

01

School shootings happened in communities all over the United States in schools and districts of varying sizes.

02

Most were not mass shootings like what took place in Parkland, Fla., and Santa Fe, Texas.

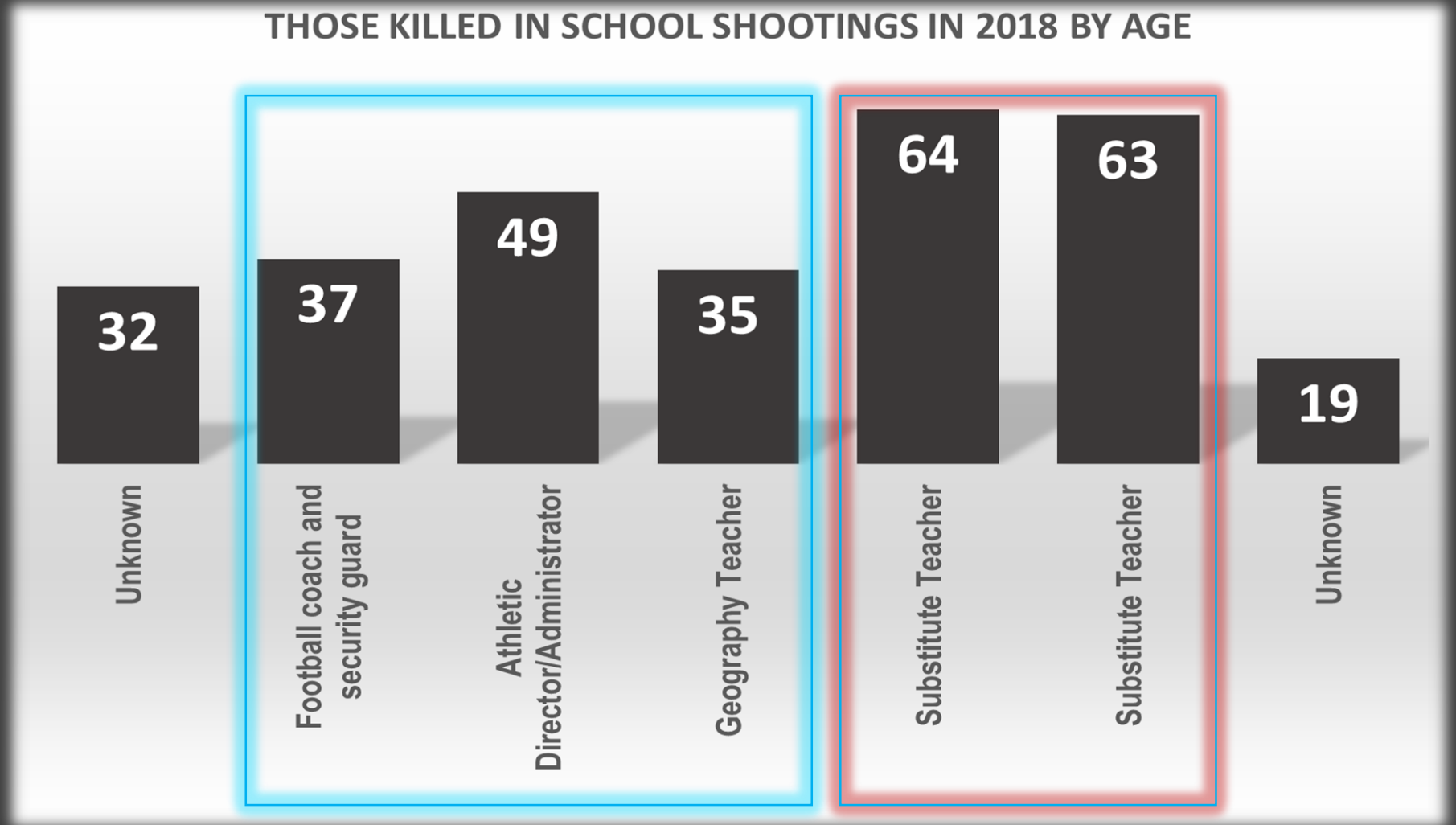
03

How shootings of all sizes affect students and staff who aren't injured or killed—through exposure to trauma—is often overlooked.

04

Schools are responsible for the safety of students outside the school day and outside the school building – including sporting events.

School Shootings – Impact Beyond Students



Marjory Stoneman
Douglas

Santa Fe High School

SOURCE: News reports; *Education Week* reporting

Responsibility Facts

01

Schools are responsible for the safety of students, staff and visitors

02

This extends outside the traditional school day and outside the school building – including sporting events

03

That responsibility includes athletic fields, playgrounds and drop-off/pick-up areas

10 years. 180 school shootings. 356 victims.



TIMES AND PLACES INCIDENTS OCCURRED



Of the 13 incidents that happened
in the building *and* during school hours:

10
had police officers/SROs
assigned to the school

19,965
students were exposed
to violence

NCES enrollment data from 2015-2016.
Total K-12 enrollment for public schools
that year was 50,438,000



2
Elementary Schools



4
Middle Schools



18
High Schools

How do we address this responsibility?

- Limit the number of entry points.
- Utilize technology integration for keyless entry.
- Exterior mechanical equipment and other utility enclosures should be locked at all times.
- Restrict roof access by eliminating any potential climbing points. Secure any roof hatches.
- Basement windows should be protected with security screens or window well covers.
- Place trash containers and dumpsters away from buildings.

Exterior Measures

Site Based Activities

Building Envelope Security

Interior Measures

How do we address this responsibility?

- Ensure clear sight lines through maintenance of buildings, landscaping features and lighting.
- Trim trees and shrubbery to eliminate hiding places and provide clear lines of sight.
- Provide fencing that limits access while allowing proper egress. Fence off areas that may create niches and blind spots.
- Ensure “outbuildings” such as field houses and modular units have adequate fencing and connections to main buildings.
- Site lighting should be uniform, and eliminate shadows or glare. Lighting should enhance visibility, discourage trespassing, and prevent school vandalism.

Exterior Measures

Site Based Activities

Building Envelope Security

Interior Measures

How do we address this responsibility?

- Traffic control devices such as stop signs and speed bumps or dips. Intentional or accidental high speed vehicle approaches can be deterred by bollards and concrete planters or earth berms.
- Ensure that buses can drop-off and pick-up students directly from a designated, marked loading/unloading zone near a supervised entrance.
- Ensure parent drop-off and pick-up zones are clearly designated and separated from bus traffic.
- Ensure visitor, student and staff parking is clearly marked and if possible separated.
- Designate parking spaces for faculty, staff and students and require parking decals to easily identify unauthorized vehicles.
- Maintain space for emergency vehicle access and evacuation for building play areas and fields.

Exterior Measures

Site Based Activities

Building Envelope Security

Interior Measures

How do we address this responsibility?

- Relocating Fire alarm pull stations so they are not in the secure vestibules.
- Install ballistic or shatter resistant glass during construction or renovation projects.
- Install ballistic or shatter resistant film to existing windows that are considered vulnerable, often entry or first floor areas.
- Consider lanyard type visitor passes versus stickers which tend to fall off.
- Store visitor passes behind counters and consider ways to ensure they are returned or voided upon sign out or expiration.
- After school programs use by the community in such areas as gyms, auditoriums or meeting rooms should be gated off from hallways and other parts of the building.

Exterior Measures

Site Based Activities

Building Envelope Security

Interior Measures

Start with assessments

Site Assessments



Internal

Classrooms/Hallways/common areas

External

Grounds/Fields/Parking lots

Site Reviews



Emergency Management Plans

Contact Numbers

Evacuation Sites

Reunification Sites/Agreements

Training Assessments



*Test effectiveness of
current drills: lockdown,
shelter & evacuation*

By applying ***realistic assessments*** and ***testing the effectiveness*** of our response to current drills we begin to improve and address our vulnerabilities and weaknesses

Lockdown drills: How to balance safety and stress

Under pressure to tighten security, K-12 leaders also work to reduce trauma

By: [Matt Zalaznick](#) | December 19, 2019



“Is it possible to be prepared without being scared?”

“Kids should be prepared, but also that drills do not have to be scary to be effective.”

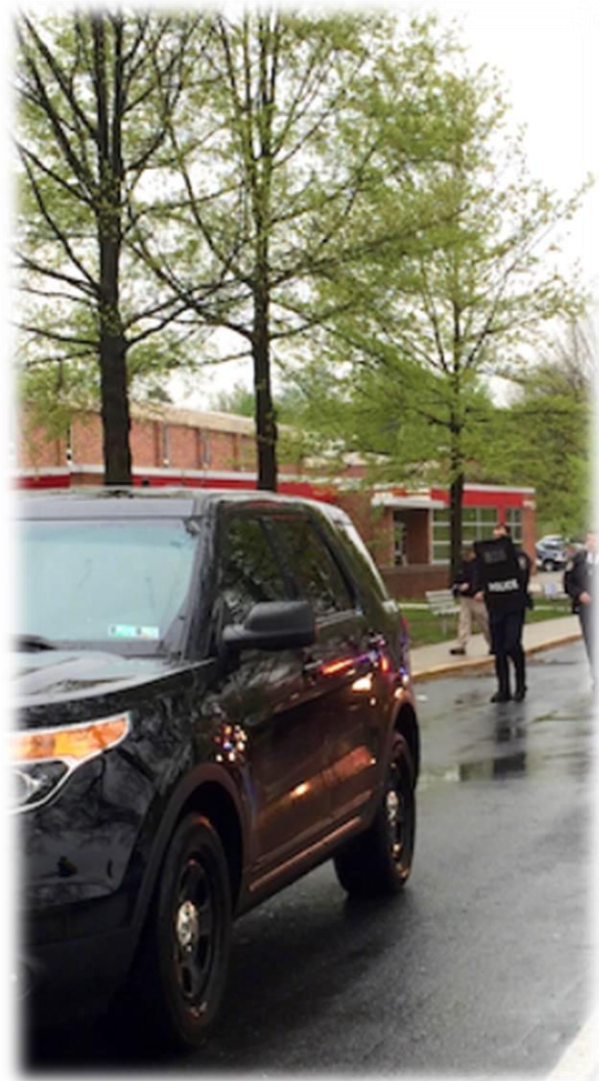
“Schools can take steps to minimize the anxiety and trauma surrounding lockdown drills.”

Jaclyn Schildkraut, Researcher and associate professor of criminal justice at the State University of New York Oswego

Lockdown drills: How to balance safety and stress

Under pressure to tighten security, K-12 leaders also work to reduce trauma

By: [Matt Zalaznick](#) | December 19, 2019



“Is it possible to be prepared without being scared?”

“The idea is to teach lockdown procedures like we would reading and math”

“We want to make them thoughtful and routine. We can’t just throw students and staff into a drill and expect them to know what to do”

Cathy Paine, crisis response team lead for the National Association of School Psychologists

Drills need to be thoughtful versus routine:

“Practice like you play, play like you practice ” – Robert K. Weck,
Chief of Police, Summit Police Department



What Did We Learn in Summit?



Visual Gaps

— Large rooms and common areas with high noise had no way of seeing we were in Lockdown or drill of any kind. (target-rich)

Hearing Gaps

— Lack of speakers led to areas lacking coverage of announcement for Lockdown or drill of any kind.

Vulnerabilities

— Individuals outside the building were cut off from any visual or auditory notice of Lockdown or drill of any kind.

Need for Vigilance

— Constant training and staff notification of drills, procedures and systems is needed to address change in staff.

Meeting Our Needs Through a Highly Effective Coordinated System



**One-Button
Notification**



**Scalable, Integrated
Technology**



Radio Wireless



**Automated
Notification**



**Classroom/Office
Phone Activation**

STAYING CURRENT ON TRAINING

Brain Science: The Forgetting Curve <https://learningsolutionsmag.com>



50%



30 Min

70%



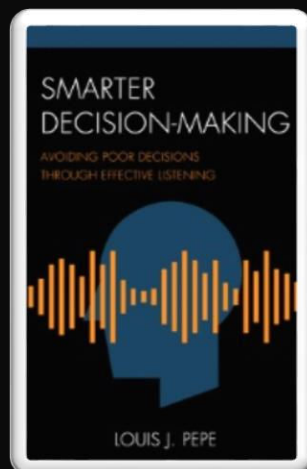
24 Hours

90%



1 Week

Thank you



**Questions?
More Information?**

LOU PEPE PRESENTATIONS, LLC

<https://loupepersba.wixsite.com/mysite>